

Homeward Bound

A holistic, wrap-around program that provides vulnerable single mothers and their children with access to the resources and opportunities they need to gain education, employment and build a better future.





The Issue



Single Mothers in Canada Living In Poverty

- **90% of families using emergency shelters across the country are headed by single females.** This does not include VAW shelters or transitional housing.
- **30% of single mothers are raising their children in poverty.** This amounts to almost 1 million women across Canada².
- **Systemic barriers put women at a higher risk for homelessness.** Factors include violence, lack of affordable housing, lower wages, un/underemployment, and lack of affordable childcare³.

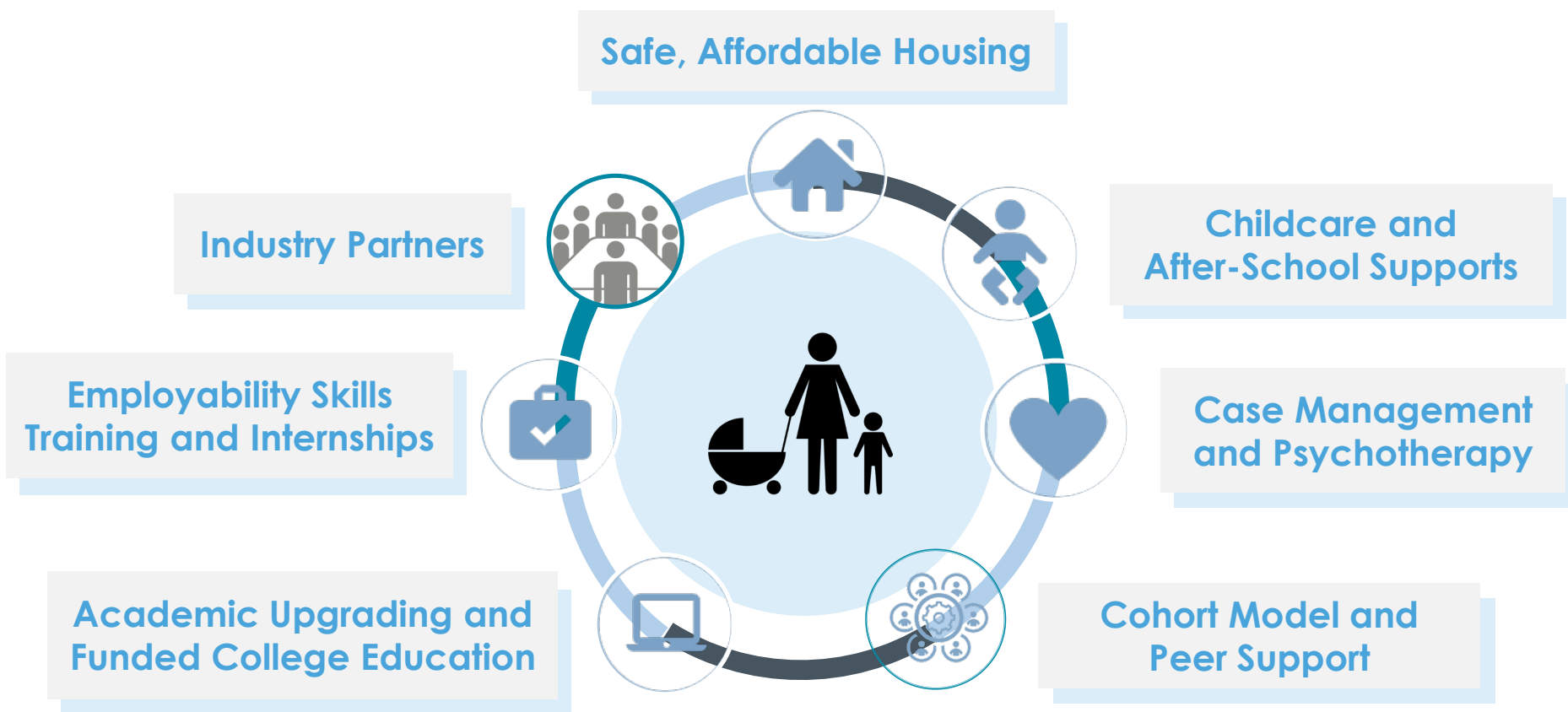


What is Homeward Bound?

An award-winning, proven intervention for single mothers

- Piloted in Toronto by WoodGreen in 2004, Homeward Bound is a proven program that is unique in Canada.
- Homeward Bound is a four-year program for single mothers and their children who are homeless, living in shelters, or precariously housed.
- The program eliminates barriers one-by-one with intensive case management and wraparound supports.

The Homeward Bound Model



Steps to Success

- The Homeward Bound program has **four phases**:
 1. **Phase 1:**
Academic and Life Skills Training
 2. **Phase 2:**
College Education
 3. **Phase 3:**
Employment Skills Training
 4. **Phase 4:**
Internship and Employment





Homeward Bound's Impact



- To date, Homeward Bound programs across Ontario have served **over 280 women and 450 children.**
- The Homeward Bound program works to **break the cycle of intergenerational poverty** for mothers and their children.
- In 2018, Homeward Bound Toronto completed a **5-year retrospective** study on the impact of the Homeward Bound program.

5-Year Study: Proven Outcomes



Upon Intake

90% of women were living in shelters, precariously housed or fleeing abuse

Post Graduation

94% are living in stable housing

8% own their home

88% employed or in school

Homeward Bound's Social Impact



For every dollar invested in
Homeward Bound,

\$6 are returned to society

The social return on
investment of Homeward
Bound is immense



Ending the Cycle of Poverty



Impact of Homeward Bound on Children

- Increased safety and stability
- Improved school performance
- Increase socialization and positive peer connections
- Interaction within a positive, child-friendly environment

"My children have benefitted in so many ways! We were no longer worried about meals, a roof over our head or a safe home. All of that was taken care of so I could focus on school and my children. I am so grateful!"
- Homeward Bound Graduate